



Compatible with  
Viral Transport Media  
(VTM) without  
denaturing proteins

## NADAL® COVID-19 Ag Rapid Test

Rapid test for the detection of SARS-CoV-2 viral nucleoprotein antigens in human nasopharyngeal and oropharyngeal specimens

### The importance of a COVID-19 antigen rapid test

“Each category of diagnostic test has its own unique role in the fight against this virus.”

– U.S. Food and Drug Administration

While the NADAL® COVID-19 IgG/IgM Rapid Test\* detects the virus indirectly, the NADAL® COVID-19 Antigen Rapid Test detects it directly by looking for the presence of specific proteins from the SARS-CoV-2 virus. Thus, antigen detection closes a diagnostic gap. The nucleocapsid protein (N) is ideal for virus detection, as it is highly abundant in the virus and sufficiently specific for SARS-CoV-2. It is one of the 4 most important structural proteins and is involved in replication, transcription and packaging of the viral genome.

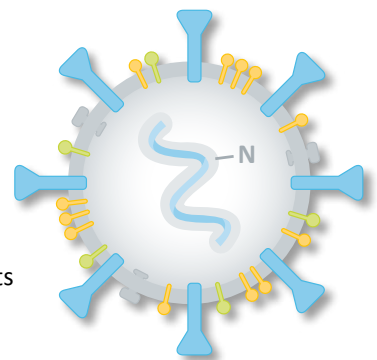
### NADAL® COVID-19 Ag Rapid Test

The NADAL® COVID-19 Antigen Rapid Test is a lateral flow chromatographic immunoassay for the qualitative detection of SARS-CoV-2 viral nucleoprotein antigens in human nasopharyngeal and oropharyngeal specimens. This test is intended for use as an aid in the diagnosis of infections with SARS-CoV-2. Note that the concentration of viral nucleoprotein antigens may vary in the course of the disease and might fall

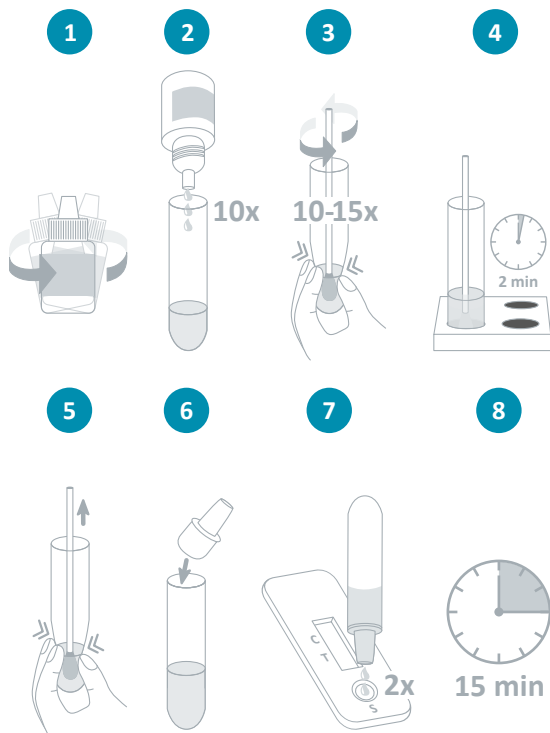
below the detection limit of the test. Possible infectiousness of test subjects cannot be ruled out based on negative test results.

### Your benefits at a glance

- ✓ High specificity
- ✓ Highly sensitive with high viral loads
- ✓ Easy to use
- ✓ Fast and reliable test results in just 15 minutes
- ✓ Testing can be performed using naso- and oropharyngeal specimens
- ✓ Can be stored at room temperature
- ✓ All test components – including sterile swabs – are included
- ✓ No cross-reactivity with human pathogenic coronaviruses (like hCoV-229E, -HKU1, -NL63 and -OC43) or influenza viruses (like influenza A/B)



## Test procedure

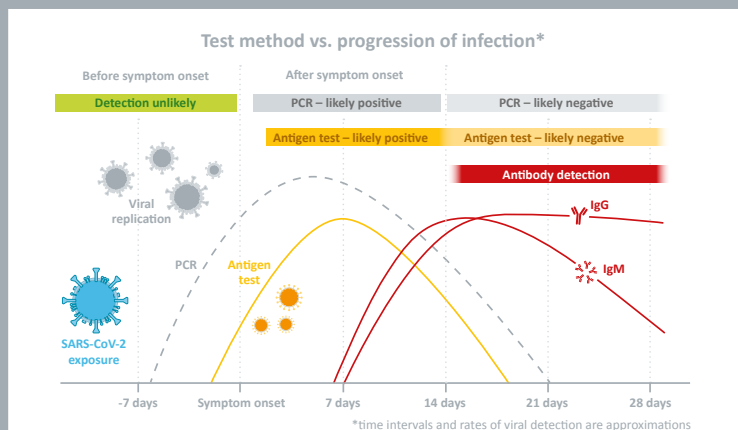


More detailed information can be found in the instructions for use.

## Result interpretation

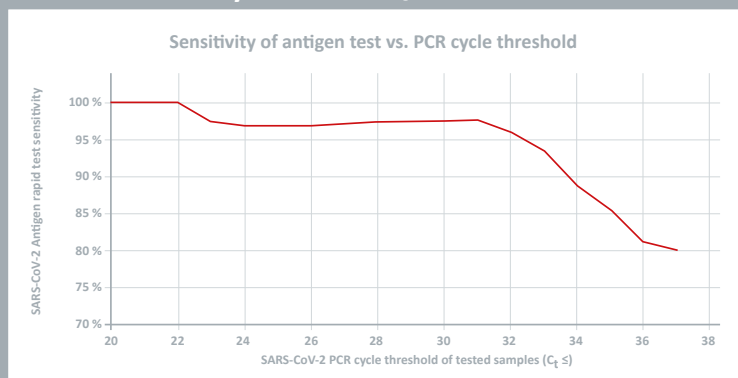


## Closing a diagnostic gap – similar detection window to PCR



Source: Sethuraman N, Jeremfah SS, Ryo A. Interpreting Diagnostic Tests for SARS-CoV-2. JAMA. 2020;323(22):2249-2251.

## Identifying patients with high viral loads – similar sensitivity to PCR at C<sub>t</sub> values ≤ 30



## NADAL® COVID-19 Ag Rapid Test

Rapid test for the detection of SARS-CoV-2 viral nucleoprotein antigens in human nasopharyngeal and oropharyngeal specimens

Product	Certification	Sample material	Sensitivity	Specificity	Product code	Pack size
NADAL® COVID-19 Ag test cassette	CE	Naso- and oropharyngeal specimens	97.56 % (C <sub>t</sub> range 20-30)	> 99.9 %	243103N-20	20 tests per pack

Materials supplied: test cassettes • sterile swabs • extraction tubes incl. dropper caps • reagent holder • buffer bottle • package insert

Our **customer service team** is on hand to answer any questions you may have by telephone, via email or in a personal consultation. For details on **your local sales office and regional free phone numbers**, visit [www.nal-vonminden.com](http://www.nal-vonminden.com).

**We help you care!**

Rapid Tests

Laboratory Diagnostics

Laboratory Service

Consulting & Service

Headquarters

**nal von minden GmbH** · Carl-Zeiss-Strasse 12 · 47445 Moers · Germany  
 Chief Executive Officers: Sandra von Minden · Roland Meißner · Thomas Zander  
 Commercial reg. Klevé · HRB 5679  
 Tel.: +49 941 290 10-0 · Fax: +49 941 290 10-50

[info@nal-vonminden.com](mailto:info@nal-vonminden.com)  
[www.nal-vonminden.com](http://www.nal-vonminden.com)